

Wacky Weather Coming your Way!!!

By Micheline Aleman

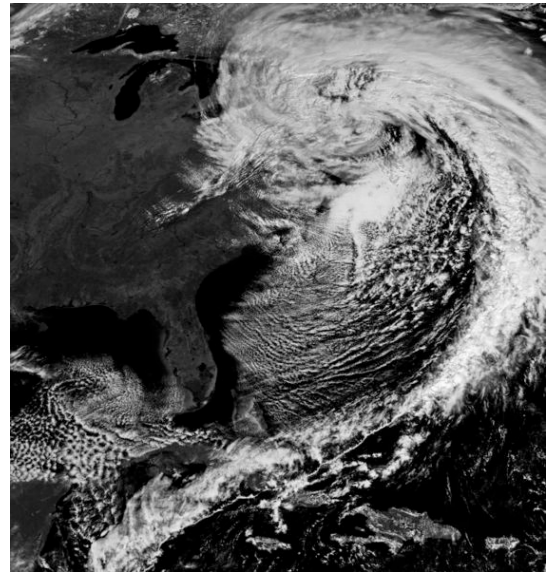
Take a minute and picture yourself looking out your window and seeing nothing except snow!! No cars, no people, no sidewalks, or streets just a bunch of soft fluffy snow covering everything in sight. Your first thought might be, “Yeah no school!” But then image yourself being trapped in your house and not being able to leave or open your front door because the snow is too high. Storms like these can occur, they are called Nor’easter’s. They are some of the most enraged storms that can hit the east coast, which means including Boston!!!



Nor’easters may move slowly at first but they pick up speed as they go through stages. Nor’easters can bring heavy rain, heavy snow, and severe coastal flooding to the East Coast. All Nor’easters are born in and get their energy from the **Jet Stream**. Jet Streams are very fast flowing sometimes narrow, air currents found in the atmosphere above the surface of the earth. Over the years the Jet Stream has started to become curvier, making greater temperature differences. By the Jet Stream becoming curvier it creates a greater chance of having a more powerful storm. Nor’easters can affect any state along the East Coast. Some storms can last up to five days and then could take weeks to fix the damage.

Some history on some of the big Nor’easters storms would be “The North American Blizzard 2005” this storm dropped 3ft of snow in parts of southeastern Massachusetts as well

as Boston. "The Late November Nor'easter of 2006" this storm produced up to 2.09 inches of rainfall in Boston on the morning of November 24. One of the most famous storms was "The Halloween Nor'easter of 1991." Some may know this storm as "The Perfect Storm" because of the movie and book that was based on the storm. There were heavy winds that blew over the ocean at more than 100 mph. Ocean waves peaked at 100 feet, the height of 10-story buildings!!! Waves 30 feet high battered the New England coast, destroying 200 homes. To meteorologists this



storm was considered to be a perfect example of a deadly force of nature. Ocean **waves** are generated by wind. The longer and heavier the winds blow, the stronger the waves and the stronger the waves are, the more damage they cause the costal areas.

If a Big storm like a Nor'easter hit Boston it could cause lots of damage. The Massachusetts coastal line would become extremely flooded, and massive winds would cause many homes that are near the ocean to become damaged. Unlike some coastal states Massachusetts is one of the fortunate states because we have Cape Cod, which acts like a barrier island. **Barrier Islands** are long islands that are found along coastlines all over the world, especially the East Coast. Cape Cod is separated from mainland by a canal, thus it's not a true barrier island, but it has all the characteristics of one and acts like one for Massachusetts. Barrier Islands are wonderful vacation spots and home to lots of wildlife. They become very important when Hurricane and Nor'easter season begins. They form a wall or shield that helps protect the main land, by taking in most of the flooding, wind, and heavy waves. If Boston were ever hit it

could cause lots of heavy winds, and snow, or rain. There are no barrier islands protecting Boston if the Nor'easter were coming from the north. This unexpected storm could harm many homes and businesses along the Boston area. Thankfully most Nor'easters hit Boston from the South, hitting Cape Cod first, so we are better protected because the Cape does its job to act as a barrier. So the next time you hear a Nor'easter is coming just be prepared for the snow, or rain, and lots of wind.